

# THE TEAM



**When you have eliminated the impossible, whatever remains, however improbable, must be the truth. It's simply elementary, my dear readers.**

## **A QUICK RUN DOWN**

In the list below, you have been given pictures and names of the staff members. You must match each staff member with a detective like character. No description of the staff or characters has been given. You must use your detective skills to identify who the staff are and what their best match could be.

- Step 1** Do some research and make your decisions as a group.
- Step 2** On your blog, tell us what your choices were and explain how you think they match.
- Step 3** Note that the staff will be we voting for what they believe is the best matches. Every time that your answer matches our answers, you get a point!
- Step 4** Make sure to blog your answers by 4pm on Thursday.

# THE TEAM



LEIGH WHITE



BELMA GAUKRODGER



SANDRA DYKE



TRISHA KRISHNASAMY



CRAIG NICOLL



MARK CAUKILL



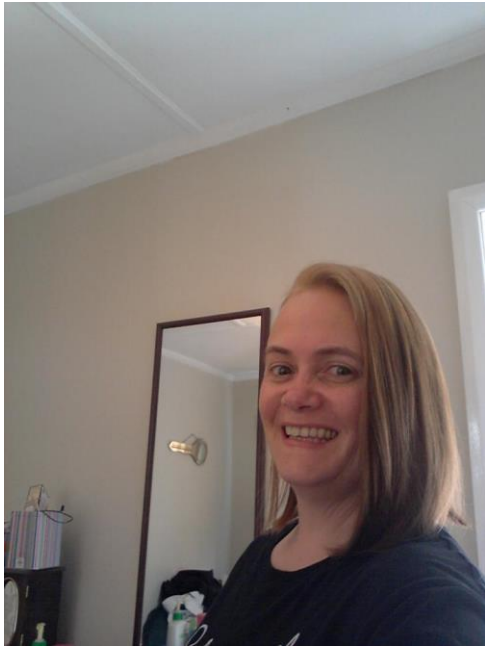
TODD COCHRANE



MATTHIAS OTTO



CAMILA BERNAL



ELIZABETH TRUDEAU



NEIL BENSON